

SECTION 18, T.6N., R.1E., S.L.B. & M.

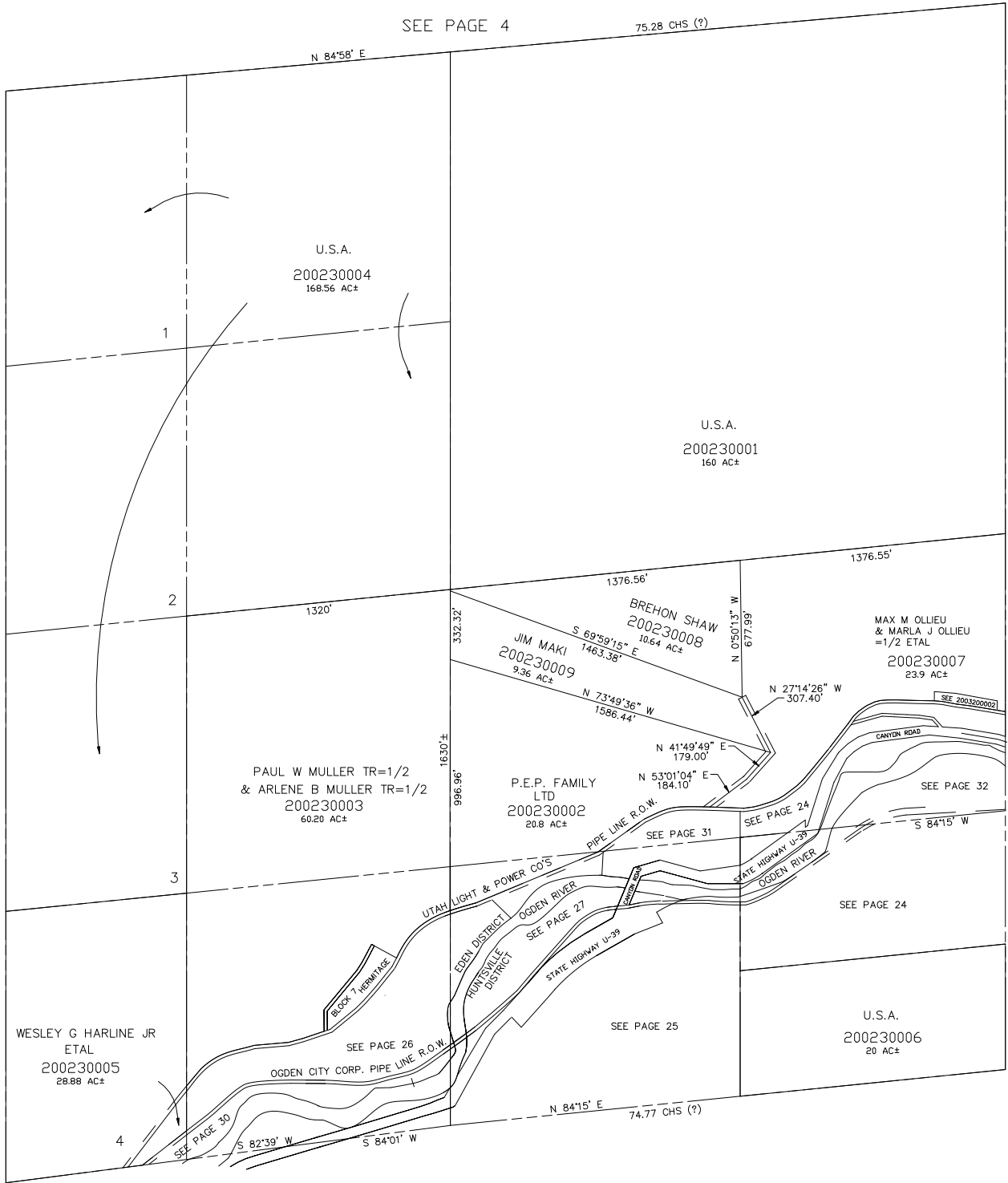
EDEN & HUNTSVILLE DISTRICTS

SCALE 1" = 400'

TAXING UNIT: 28

SEE PAGE 4

75.28 CHS (?)



SEE BOOK 11  
PAGE 86

SEE PAGE 20

SEE PAGE 33